



Multiplying Disciple Makers

Course Catalogue 2025

Table of Contents

From the President	3
General Information	4
What We're About	4
Acknowledgment of our Partners	4
Beginnings.....	5
Academic Calendar.....	5
Enrollment and Tuition	5
Admissions.....	6
Programs	6
Grading Policies	7
Time Requirement	7
Dropping a Course	8
Graduation	8
Certificate in Ministry.....	9
Diploma in Ministry.....	9
Associate in Ministry.....	10
Certificate in Ministry Course Descriptions	10
Diploma and Associate Degree Course Descriptions	12

From the President



Welcome to iTEE University's 2025 course catalogue. I hope you will find the information encouraging, motivating, and helpful to your journey of becoming an equipped pastoral leader.

iTEE University exists to serve Christian leaders who are building up the body of Christ by bringing Jesus' life-giving message to communities worldwide. The faculty, staff, and I praise God for the opportunity to serve those seeking Bible and ministry education.

The following pages cover details of the programs, policies, courses, and other valuable information. These will help you determine if iTEE University is a good fit for you. I trust that as you begin studying the word of God more deeply, you develop new ministry knowledge, character, values, and skills for local ministry environment.

iTEE University was founded to offer quality education to pastoral leaders at various stages of their educational journey. iTEE University delivers Bible and Ministry education globally, especially in areas underserved by existing theological training institutions. Our team works hard to make Biblical education affordable for all leaders. iTEE University serves students by making education available online, face-to-face, or a combination of these styles. Students can study in place, rather than leaving home and ministry.

iTEE University trains a wide range of pastoral leaders. For example, we equip pastors, teachers, elders, deacons and deaconesses, small group leaders, and many other Christian leaders to minister to the body of Christ.

If you wish to begin your journey to become equipped as an approved workman of God, correctly handling the scriptures (2 Timothy 2:15), go to <https://itee.university/admissions>

Because iTEE University is committed to bringing biblical education to leaders globally, we offer courses in an increasing number of languages and teach those courses through native-speaking teachers in over 50 countries. Since the need for biblical training is so extensive worldwide, iTEE University has a strategic plan.

First, we seek bi-lingual pastoral leaders in each country and language who are willing and able to study in English. These leaders can then teach future generations of pastors through iTEE University in their native language. This is a discipleship approach to the global problem our leaders face. Since its inception, iTEE University has sought to fulfill 2 Timothy 2:2, making biblical education available in each country and language, both online and face-to-face.

We know that many pastors and leaders struggle with finances. iTEE University works hard to make biblical education affordable for most leaders experiencing limited resources. We also offer three levels of education to best fit their needs.

May God bless you as you start your journey!

Dr. George J Law President, iTEE University

General Information

What We're About

And the things you have heard me say in the presence of many witnesses entrust to reliable people who will also be qualified to teach others.

– 2 Timothy 2:2 (NIV)

Our Vision

To promote worldwide, self-sustaining training movements that biblically equip church leaders.

Our Mission

To bring relationally-driven biblical ministry education to church leaders lacking access.

Our Passion

To multiply disciple-makers.

Acknowledgment of our Partners

iTEE University could only exist with our curriculum partners. Most of our course content comes from other organizations. The Timothy Initiative supplies many of our Certificate in Ministry program courses. Materials for the Diploma in Ministry and Associate in Ministry programs mostly come from other quality organizations: BEE World, Third Millennium Ministries, Shepherds Global, Source of Light Ministries, and Trinity Video Seminary. Other courses have been developed by staff writers.

Our contribution to Christian leadership training involves developing interactive online and face-to-face courses. These courses develop life transformation and practical skills, through hands-on delivery. Course facilitators apply interactive learning and best educational practices to deliver sustained mentoring of students.

As a Christian educational organization, we best reflect the kingdom of God by sharing resources and cooperating with sister organizations in their endeavors. We are thankful for these ministry partners.



Beginnings



In 1979, fifteen mission organizations met in Vienna, Austria, to address the critical need for leadership training in countries with restricted access. It was at that meeting that Biblical Education by Extension, hereafter BEE, was founded. The iTEE University founder became one of the leaders at the meeting. He later served as a founding board member. For eight years, he served at BEE. It became a successful distance education program and met the needs of thousands of leaders over the next 45 years.

The focus on multiplication, teachers going to the students, facilitated learning, dialogue education, and group learning are concepts that have endured and permeated iTEE University even as technology changed drastically.

Online education integrates well with Jesus' principles of developing leaders and offers tremendous advantages regarding global accessibility and cost.

iTEE University was born out of a group of leaders with extensive international ministry experience who had experience offering online ministry training. iTEE University launched in May 2019. Integrating the online curriculum from several Christian publishers, and employing best pedagogical practices, discipleship principles, and proven educational resources, iTEE University addresses the global challenge of training leaders. iTEE University is an associate member of the Asia Theological Association seeking full accreditation. It is also pursuing certification with other accrediting and certification agencies.

Academic Calendar

Term 1

Second Monday of each January.

Term 2

Second Monday of each May.

Term 3

Second Monday of each September.

Each course typically takes 12 to 14 weeks, leaving students with a break between terms.



Enrollment and Tuition



iTEE University courses and programs are affordable for most students. Tuition rates vary by country or region. Students residing in Myanmar, India, Kenya, Zambia, Uganda, El Salvador, Guatemala, Mexico, United States, and Canada must apply, enroll, and pay tuition through the iTEE University Campus operated by our local or regional partners.

The list of contact information for our country and regional partners is on the website. To learn about applicable tuition rates in your country, go to <http://www.itee.university/> and note information on regional or country-specific tuition rates.

Those outside the countries listed above can apply online at <https://itee.university/admissions/>

After completing an application, admitted students receive an email with a link to complete the enrollment process. Please check your email for this specific message, including your spam or junk folder. Tuition fees are country specific.

Tuition rates for courses and payment options specific to your geographic area are on the website at <https://itee.university/wp-content/uploads/2023/06/Course-Costs-by-Course-and-Region-Term-3-2023.pdf>

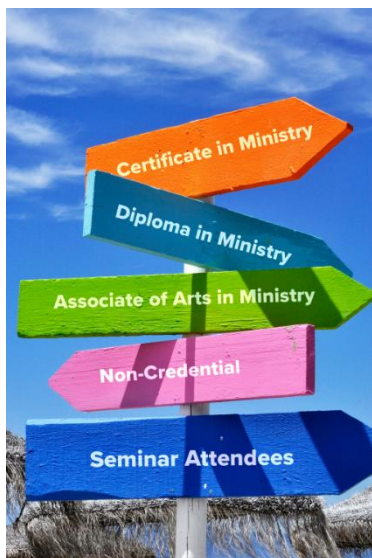
Courses are available in select languages such as English, Spanish, Hindi, Tamil, Telugu, Burmese, Urdu, Maa, Swahili, and Chinese.

Admissions

Any Christian leader seeking access to biblical training can apply for admission. The new student admission application is available online at <https://itee.university/admissions/>. Successful applicants will meet the following conditions:

- Certificate in Ministry students are not required to have a secondary (high school) education. Diploma in Ministry and Associate in Ministry students must have completed their secondary (high school) education and can provide attestation to completion of that training.
- Must be currently engaged in ministry either in the church or marketplace.
- Must possess a desire to train other leaders, pastors, or church planters. We are highly committed to the Apostle Paul's pattern of discipleship. "And the things you have heard me say in the presence of many witnesses entrust to reliable people who will also be qualified to teach others." (2 Timothy 2:2, NIV)

Programs



Certificate in Ministry students complete a flexible, non-formal training program designed for faithful, available, and teachable lay pastors and leaders without a high school diploma. Upon completion of ten certificate courses, students receive a certificate. Certificate courses are not transferable to undergraduate schools.

Diploma in Ministry students complete the 12-course Diploma in Ministry program. This program is for busy pastors, lay pastors, and leaders with at least a high school diploma seeking local training.

Associate in Ministry students have a high school diploma, have completed the Diploma in Ministry program and seek creditable college-level courses toward a degree. Students usually decide to pursue the 72-CU (Credit Unit) Associate when they near completion of the Diploma of Ministry program but need further study.

Non-credential students have not indicated an intention to complete a program. They seek to take diploma and/or certificate-level courses in their areas of interest.

Seminar Attendees pursue short seminars either online or face-to-face. Seminars have no academic entrance requirements and are non-credited.

Grading Policies

Final grades will be either **pass or fail**. Facilitators will use online grade tracking to encourage and correct student work. Completing work in all the following areas is required to pass each course:

Head

Reading course texts and articles, taking and passing quizzes, writing and submitting "Life Notebook" journal entries, and participating in discussions with other classmates are all part of the intellectual portion of the course.

Heart

Students use their reflection journals to write a short, graded paper on personal spiritual insights learned, resulting in an awareness of God's work to form their character during the course.

Hands

Students complete a guided project, customized for each course, that helps them develop ministry skills related directly to the course content. They then submit a graded report on that project.

Deadline

Students must complete the course by the course deadline. Unless the Registrar extends the deadline, the grade is final once a class ends. Students may repeat a course for which they failed to earn a passing grade.

Time Requirement



Multiple studies in educational research inform us that learning is tied to actual time spent on learning. Students who do well spend ample time on their studies. You should spend about 7-10 hours per week on your coursework.

iTEE University has adopted the following broadly accepted accreditation standards per Credit Unit (CU) as follows:

- **1 CU** 2,000 minutes (40 hours including ten min./hr. breaks) of classroom/online/out-of-class study.
- **2 CU** 4,000 minutes (80 hours including ten min./hr. breaks) of classroom/online/out-of-class study.
- **3 CU** 6,000 minutes (120 hours including 10 min./hr. breaks) of classroom/online/out-of-class study.

The total time spent on a course includes all head, heart, and hands activities. The amount of time is particularly important for students seeking credit, especially those who may transfer their credits to resident schools.

Dropping a Course

iTEE University demonstrates highly relational learning, and our faculty makes every effort to work with students to facilitate their success. But sometimes, students do not or cannot follow through with their studies for various reasons. In these cases, students who do not display adequate progress will be removed administratively.

No-Show Students who have registered for a course but don't do further work after iTEE University staff unsuccessfully attempts to contact them are removed from the course.

Drop-out students who begin work on a course but who, at some point, fail to maintain a record of progress, are removed from the roll after three weeks.

Students who have chosen to *withdraw* from a course must re-register if they take it later.

Where students have paid tuition for classes, *no refunds* will be given without specific authorization from the Dean of Students.

If a student enrolls in and fails to complete the same class *three times*, he may only enroll in that class again with special permission of the Dean of Students.

Withdrawal

Students desiring to withdraw from a course program (Certificate, Diploma, or Associate) must inform the Dean of Students electronically. Any student who fails to take classes for three consecutive terms will be considered withdrawn from the program. A student who withdraws but desires to return may reapply at any time. The previous credits on their record may be applied toward their program completion. However, any student who withdraws and is re-accepted into the program must complete the requirements that are in effect at the time of their re-admission.

Program Continuity

Students who maintain their progress in a program will be permitted to finish using the requirements in effect (as shown by the iTEE University Catalogue) when they start. In the case of a course no longer available, the Dean of Students will negotiate with the student regarding an alternative course.

Graduation



The **Certificate in Ministry** program requires passing ten Certificate-level courses or above, worth at least 29 credit units (CU), including an internship course. Students have five years to complete the ten courses.

The **Diploma in Ministry** program requires passing 36 CUs; 18 CUs must be completed in Bible/Theology courses, and 18 CUs must be ministry skill courses, including an internship. Students have up to five years to complete the 36 Credit Units for the Diploma in Ministry.

The **Associate of Arts in Ministry** program builds on the Diploma program and requires passing another 36 CUs, 72 CUs in total. Students have up to ten years to complete the 72 Credit Units for this degree.

Certificate in Ministry

The Certificate in Ministry is a non-formal training program for leaders without a high-school (or equivalent) educational background. It consists of nine courses plus an internship taken for course credit, thus completing ten earned courses, worth 29 CU. For all students, Galatians must be taken as the first course. All online students must take Student Orientation before beginning.

A Diploma Level course (or higher) that covers the same topical material as a required Certificate Level course may be substituted for that Certificate Level course. Contact your academic advisor or the Dean of Students for information about course substitutions.

At least nine of ten courses are needed to graduate:

- Galatians (required)
- One to One
- Discovering the Bible
- Spiritual Leadership or Ministry Leadership
- Communicating God's Word
- Foundations of Christian Marriage
- Old Testament
- Major Bible Doctrines
- New Testament Gospels
- New Testament Epistles



Internship

Your internship is a for-credit experience toward the end of your Certificate program. It involves teaching a second-generation group under the direction of a supervisor with expertise in your chosen area of ministry. You will keep a log and gain valuable experience during this time of supervised ministry. The Dean of Students will give directions concerning applying for the Internship course.

Diploma in Ministry



Our Diploma program is designed for shepherd leaders who have completed high school or its equivalent. The program seeks to equip leaders holistically with Head (knowledge), Heart (character), and Hands (ministry) skills. Students must complete 36 course Credit Units. The Dean of Students will automatically place you into each required class. You will be notified which class you were enrolled in before the beginning of each term. When electives are available, the Dean of Students Office will contact you before enrolling you in the elective that best fits your ministry needs. The course list may vary slightly with partner preferences.

Courses offered:

Available Bible/Theology Courses

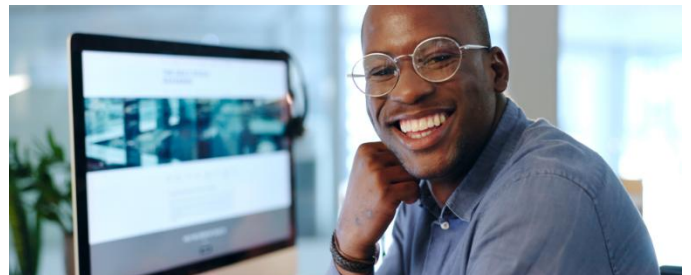
- Galatians **(must be taken first)**
- Bible Study Methods, or He Gave Us Scripture
- Bible book courses: Romans, 1 Corinthians, Gospel of Mark, 1 Peter, Psalms, and Kingdom, Covenant and Canon of the OT
- Old Testament Survey
- New Testament Survey
- Major Bible Doctrines

Available Ministry Skills Courses

- The Christian Life
- Foundations of Christian Marriage
- Spiritual Leadership or Ministry Leadership
- Transformational Teaching
- Church Dynamics, Church Planting, Communicating God's Word, or Culture Meets Scripture
- Internship

Associate in Ministry

The 72 Credit Unit Associate in Ministry program is founded on the Diploma program, usually a prerequisite for entry. The Associate degree is an English-language program designed for accreditation and the ability to transfer credits to Bible and theological schools. It is specifically designed for busy pastors, lay pastors, and leaders with at least a high school diploma who study online or in face-to-face cohort groups in their localities.



Credit may be granted for previous ministry experience, internship participation, and coursework outside of iTEE University.

Certificate in Ministry Course Descriptions

Spiritual Growth

One to One

This course is designed to help a young believer or unbeliever by introducing the student to who Jesus is. (If you do not know who Jesus is, or if you are not sure of your salvation, study this part carefully). It also serves as a discipleship guide for believers to use with new believers. We recommend studying this part even if Christ is already Lord of your life. The more knowledge you have of the gospel's truth, the easier it

will be to share this truth with non-believers. Unit 2 introduces the importance of a devotional Bible study or Quiet Time. A Christian cannot grow spiritually without interacting with the Word of God. God's word is spiritual nourishment for the believer. Study this part and make Quiet Time part of your life. You will experience spiritual growth through reading, meditating, and applying the Word of God in your daily Quiet Time. Units 3 and 4 deal with topics essential to Christian living that will equip you in areas important for spiritual maturity.

Practical Christian Living

This training course aims to equip Disciples who will make Disciples. We expect that through this introductory course, participants will be equipped to share their faith with others, the Gospel will be spread at a fast pace, and churches/missional communities will be planted.

Bible Study Methods

Discovering the Bible

Discovering the Bible is about how to study and interpret the Bible correctly. Every disciple-maker should know how to accurately hear, read, understand, and obey the Word of God. By the end of this course, the student will be able to confidently hear and/or read what the Scripture says, determine what it means, and how it should be obeyed and applied in their lives and the life of the church.

Old Testament

Old Testament

Every disciple-maker will go through the Old Testament, highlighting the major events in the order they happened. By the end of this course, the disciple-maker will be able to confidently communicate each of the Old Testament books and better understand God's plan of redemption from Creation to Christ. In applying these tools, the disciple-maker will be better equipped to handle difficult portions of Scripture as they establish missional community.

New Testament

Gospels

The sixth course of the Curriculum covers the four Gospels. The emphasis of the course is on the life and ministry of Jesus. Every disciple-maker will go through all four Gospels highlighting the purpose, themes, and 208 key events/teachings of the life and ministry of Jesus. By the end of this course, the disciple-maker will be able to communicate from each of the four Gospels confidently. As a result of this course, the disciple-maker will be better equipped to apply and teach the principles learned from the life and ministry of Christ as they are planting a missional community.

New Testament Epistles

Covers all of the remaining books in the New Testament, from Romans to Revelation. The emphasis of this course is to systematically cover the New Testament letters from the apostles to the different individuals and churches. The focus is on the major concepts and keywords of the New Testament Epistles. By the end of this course, the disciple-maker will have covered the entire Bible from Genesis to Revelation. They should have a much greater understanding of the New Testament and the whole Bible.

Doctrine/Theology

Major Bible Doctrines

Major Bible Doctrines focuses on eleven doctrines that cover the essential topics of theology. The flow of this course is a systematic study of God. By the end of this course, the disciple-maker will have covered the

major doctrines of the Bible. They should clearly understand who God is and what God is doing in our world to glorify Himself.

Practical Ministry

Disciples Making Disciples

This training course aims to equip Disciples who will make Disciples. We expect that through this introductory course: Participants will be equipped to share their faith with others. The Gospel will be spread at a fast pace. Churches/Missional communities will be planted.

Spiritual Leadership

For Christians, leadership is a spiritual process that requires a deepening walk with God. This course addresses several facets of leadership, including the need for spiritual leaders, leadership models, qualities of leaders, the discipline of prayer, stewardship of time and resources, and reproducing and developing leaders.

Internship

Your 1-3 credit units internship is the culmination of your course program, using your Hands projects, ministry skills, and what you have learned through coursework. In the internship, you will practice your ministry under the direction of a Supervisor who has expertise in your chosen area. You'll discover how you can partner with God to see hearts and lives changed in ministry.

First, students must complete and submit the Internship Application Form stating what they would like to do for their internship and who their supervisor would be. Upon approval, the internship begins. During the internship, the students keep a Weekly Time Log of hours spent on their weekly activities. At the end of the internship, students complete the Internship Report, and the Supervisor completes the Internship Performance Evaluation Form. Once approved for credit by ITEE University Staff, the Registrar's office records the grade as Pass or Fail and the amount of credit earned. Interns seeking to facilitate an ITEE University course for their internship must first complete The Transformational teaching course.

Diploma and Associate Degree Course Descriptions

Spiritual Growth

Culture Meets Scripture

This course guides participants in examining their particular cultural practices and causes them to "meet" Scripture - see what Scripture says about those practices. This comparison offers a foundation of learning so that learners' communities will choose to honor God in their cultural practices.

The Christian Life

This course helps students grow in their relationship with Christ and equips them to help others grow, no matter where they are in that relationship.

Bible Study Methods/Hermeneutics

He Gave Us Scripture: Foundations of Interpretation

Evangelical Christians affirm the Scriptures as God's inerrant word. However, we sometimes disagree over the meaning of particular verses or passages, which can influence our Christian doctrine and practice.

One reason for these disagreements is that there are many different approaches to interpreting the Bible. But how do we know which approach to interpretation is the most responsible? This course will help answer that question. It is based on the lecture series, He Gave Us Scripture: Foundations of Interpretation, produced by Third Millennium Ministries and hosted by Dr. Richard L. Pratt, Jr. with contributions from a variety of professors.

Bible Study Methods

Learning to study the Bible is one of the most critical skills that a Christian should know. This course will teach you how to study the God's Word effectively and faithfully. It will cover the inductive method of study, how to interpret different genres, growing spiritually through Bible study, and interpreting the Bible in a community. This is the standard hermeneutics (how to interpret texts) course for the iTEE University Diploma program.

Old Testament

The Incredible Journey

The Incredible Journey is a short Bible Survey that will help you navigate the Bible from cover to cover. Each book is summarized and explained so you can maximize your daily Bible reading and aim at living out the truths contained in each one.

Kingdom, Covenant, and Canon of the Old Testament

This course briefly surveys the Old Testament, examining the themes of kingdom, covenants, and canon. We will see that the Old Testament is not a random amalgam of episodes, genealogies, and prophetic tidbits. Instead, it is unified around the central theme of the kingdom of God, administered through covenants, and applied to life through the Old Testament as a "canon" or guideline. This course is based on the lecture series Kingdom, Covenants, and Canon of the Old Testament, produced by Third Millennium Ministries.

Worshipping God in the Psalms

In the Psalms, we enter more fully than anywhere else into the world of worship. For the psalmist, this meant pouring out his lament to God, telling God exactly how he felt and how much he longed for God's intervention. However, as dark and painful as these moments might be, the psalmist realized that God was faithful, righteous, loyal, and good in dealing with him. Then, his heart turned to songs of praise. This course is designed to help you read and understand the book of Psalms more deeply. While many psalms will be explained, the primary purpose is to give you the insight and skills for reading and interpreting the psalms yourself.

New Testament

Galatians

In this course, you will study Paul's letter to the Galatians. You will look at the historical background and examine the vital theological issues in the early church with which Paul dealt. You will become better acquainted with the life, character, and ministry of the apostle Paul. You will also gain new insights into Christian life and service as you apply the teaching of the epistle to contemporary situations.

Colossians

Students will study how to live according to the gospel and avoid doctrines and practices that oppose it. The course focuses on developing the spiritual maturity Paul describes in his letter to the Colossians.

Romans

In this course, you will study Paul's letter to the Romans. You will look at the historical background and examine the vital theological issues in the early church in Rome. You will become better acquainted with the life, character, and ministry of the apostle Paul. You will also gain new insights into Christian life and service as you apply the teaching of this epistle to contemporary situations.

The Gospel of Mark

Mark's gospel is a gospel of action. He introduces us to Jesus as an adult, ready to begin His ministry. Jesus is revealed as the promised Messiah of Israel, Son of David, Son of Man, and—most prominently—the Son of God. Mark shows Jesus breaking down the barriers between humanity and God by His taking on flesh and living among us. Those same three events make Mark's message clear: Jesus is the conquering Son of God who suffered and died to redeem humanity. Death could not hold Him, so He arose and now leads us on to our mission field.

True Spirituality: A Study of 1 Corinthians

In his first letter to the Corinthians, Paul counsels the church to let love and godliness have first place in their assemblies. As students study this course, they will apply his teaching and counsel to their own lives and the church today.

1 Peter: Living Faithfully in a Hostile World

Peter ministered to Christians in the Roman Empire who suffered for their faith in Christ. His message to them was to remain faithful to Christ as they lived in a world hostile to Christianity, awaiting their Lord's triumphant return. 1 Peter also speaks to us today, teaching us how and why we should live faithfully in a world hostile to our faith.

Pastoral Ministry

Church Dynamics

This pastoral ministry course will cover many facets of church ministry, including what a church is, the church's tasks, church leadership, edification, worship, and how to develop your philosophy of ministry.

Communicating God's Word

Communicating God's Word is a task that demands commitment, knowledge, and skill on the part of the communicator. This course will give you the knowledge and skills necessary to communicate God's message to men and women. Your commitment to the task will be strengthened as you become a more effective communicator. The main emphasis of this course will be on that form of communication known as "preaching." Yet the principles in the course can also be applied to any situation that would require you to communicate a biblical message.

Family Ministry

Foundational Studies in Christian Marriage

This course explores the founding principles of marriage in Scripture and several bedrock issues that affect marriage, such as understanding yourself and your spouse. It is designed primarily for engaged and married people or those who minister to them, but it is also useful for those who want to improve their close relationships. There will be practical and theological learning and a weekly discussion or other project with a spouse, fiancé, family member, or close friend.

Christian Education/Youth Ministry

Transformational Discipleship

A practical, hands-on course introducing youth leaders to the process God uses to develop youth ministry leaders among youth. This course focuses on multiplying transformational youth leaders within the urban context. The principles come from Dr. Ted Travis' devotion to scriptural teaching on developing leaders and a lifetime of ministry experience training youth leaders.

Transformational Teaching

Transformational Teaching applies 1st-century educational principles from Jesus' life with 21st-century online and educational technology. It is inadequate to train future disciple-makers with head knowledge only. Jesus' teaching model affected the head, the heart, and the hands. Course creators Dr. George Law and Pastor Rick Petty use Jesus' first-century teaching principles to equip today's leaders to teach Bible and ministry courses online. This 12-week 4-credit-hour course includes a teacher training practicum and is required to become an iTEE University faculty member. It is highly interactive and thus requires adequate time and a good Internet connection to maintain frequent online communication. Available online only.

Missions/Church Planting

Church Planting

The subject of church planting has received much attention in recent years, and yet one-third of the residents of planet Earth are still without a local church. An experienced church planter and a mission and intercultural studies professor at Trinity Evangelical Divinity School in Deerfield, Dr. Craig Ott combines sound biblical principles with the best practices worldwide and provides practical guidance for church planters. The task of planting and reproducing churches involves a comprehensive array of topics. Dr. Ott examines the biblical mandate for church planting, discusses the role and qualities of a church planter, describes the models and approaches to church planting, shares practical guidelines for leading the church, and considers factors that undergird effective church planting. We hope this course will be a tool in your toolbox of what God has called you to do to help spread His kingdom.

Internship

Your 1-3 credit units internship is the culmination of your course program, using your Hands projects, ministry skills, and what you have learned through coursework. In the internship, you will practice your ministry under the direction of a Supervisor who has expertise in your chosen area. You'll discover how you can partner with God to see hearts and lives changed in ministry. First, students must complete and submit the Internship Application Form (found at iTEE.University) stating what they would like to do for their internship and who would be their supervisor. Upon approval, the internship begins. During the internship, the students keep a Weekly Time Log of hours spent on their weekly activities. At the end of the internship, students complete the Internship Report, and the Supervisor completes the Internship Performance Evaluation Form. Once approved for credit by ITEE University Staff, the Registrar's office records the grade as Pass or Fail and the amount of credit earned.



Contact Us:

General Information

info@itee.university

Admissions

admissions@itee.university

Dean of Students

+1 (740) 815-0588

deanofstudents@itee.university

iTEE University India

iteeuindia@itee.university

iTEE University Africa

iteeuafrica@itee.university

iTEE University Spanish-Speaking World

iteeuspanishworld@itee.university

iTEE University North America

georgel@itee.university

US Mailing Address

iTEE University

P.O. Box 1652

Leander, TX 78646 USA

Phone

+1 (512) 712-2495

Web

<https://itee.university>

Bringing relationally driven biblical
ministry education to church leaders
lacking access to it.