



*Multiplying Disciple Makers*

**Course Catalogue 2026**

---

# Table of Contents

From the President.....	3
General Information .....	4
What We're About .....	4
Acknowledgment of our Partners .....	4
Beginnings.....	5
Academic Calendar.....	5
Enrollment and Tuition .....	5
Admissions.....	6
Programs .....	6
Grading Policies .....	7
Time Requirement.....	7
Transfer of Credit .....	8
Awarding Credit for Life Experiences .....	8
Dropping a Course .....	8
Graduation .....	9
Certificate in Ministry.....	9
Diploma in Ministry.....	10
Associate in Ministry.....	11
Certificate in Ministry Course Descriptions .....	12
Diploma and Associate Degree Course Descriptions .....	14

---

# From the President



Welcome to iTEE University!

If you are on the iTEE University website, checking out our 2026 program catalogue, you may be seeking biblical training for the ministry God has called you to. It will be our joy and privilege to walk with you on a journey to prepare and equip you for ministry through iTEE University's team of teachers.

iTEE University exists to serve Christian leaders who are building up the body of Christ by bringing Jesus' lifegiving message to communities worldwide. The faculty, staff, and I praise God for the opportunity to serve those seeking Bible and ministry education.

The following pages cover program details, academic policies, course descriptions, and other valuable information. I trust this will help you determine if iTEE University is a good fit for you. It is my desire that as you study the word of God more deeply, you will develop new ministry knowledge, grow in godly character, and make biblical values, and skills your very own as you serve Jesus!

iTEE University was founded to offer quality education to pastoral leaders. We deliver Bible and Ministry education globally, in multiple languages, especially in areas underserved by existing theological training institutions. Our team works to make Biblical education affordable for all leaders. Our education is available online, face-to-face, or in a combination of these modes. Students study conveniently in a place and at a time that works best for them.

We equip pastors, teachers, elders, deacons, deaconesses, small group leaders, and other Christian leaders.

If you wish to begin your journey to become equipped as an approved workman of God (2 Timothy 2:15), go to <https://itee.university/admissions>, fill out and submit your application to enter studies with iTEE University.

The 2026 catalogue will perhaps answer most of your questions. However, if you still have questions, feel free to write to our Admissions Counselor at [info@itee.university](mailto:info@itee.university). We will do our best to respond to your question within three business days.

May God bless you wonderfully!

Dr. George J. Law President, iTEE University

---

# General Information

## What We're About

*And the things you have heard me say in the presence of many witnesses entrust to reliable people who will also be qualified to teach others.*

– 2 Timothy 2:2 (NIV)

### Our Vision

To promote worldwide, self-sustaining training movements that biblically equip church leaders.

### Our Mission

To bring relationally-driven biblical ministry education to church leaders lacking access.

### Our Passion

To multiply disciple-makers.

## Acknowledgment of our Partners

iTEE University could only exist with our curriculum partners. Most of our course content comes from other organizations: The Timothy Initiative, BEE World, Third Millennium Ministries, Shepherds Global, Source of Light Ministries, and Trinity Video Seminary. Other courses have been developed by staff writers.

Our contribution to Christian leadership training involves developing interactive online and face-to-face courses. These courses develop life transformation and practical skills, through hands-on delivery. Course facilitators apply interactive learning and best educational practices to deliver sustained mentoring of students.

As a Christian educational organization, we best reflect the kingdom of God by sharing resources and cooperating with sister organizations in their endeavors. We are thankful for these ministry partners.



---

## Beginnings



In 1979, fifteen mission organizations met in Vienna, Austria, to address the critical need for leadership training in countries with restricted access. It was at that meeting that Biblical Education by Extension, hereafter BEE, was founded. The ITEE University founder became one of the leaders at the meeting. He later served as a founding board member. For eight years, he served at BEE. It became a successful distance education program and met the needs of thousands of leaders over the next 45 years.

The focus on multiplication, teachers going to the students, facilitated learning, dialogue education, and group learning are concepts that have endured and permeated iTEE University even as technology changed drastically.

Online education integrates well with Jesus' principles of developing leaders and offers tremendous advantages regarding global accessibility and cost.

iTEE University was born out of a group of leaders with extensive international ministry experience who had experience offering online ministry training. iTEE University launched in May 2019. Integrating the online curriculum from several Christian publishers, and employing best pedagogical practices, discipleship principles, and proven educational resources, iTEE University addresses the global challenge of training leaders. iTEE University is an associate member of the Asia Theological Association, and is seeking full accreditation with other accrediting agencies.

## Academic Calendar

### Term 1

Begins with the Second Monday of January.

### Term 2

Begins with the Second Monday of May.

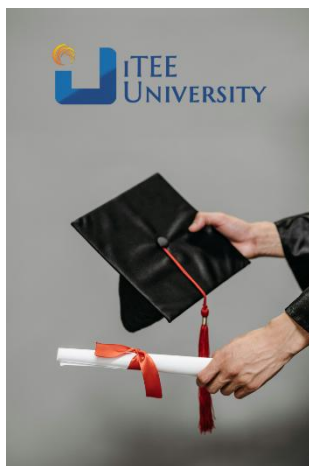
### Term 3

Begins with the Second Monday of September.

Each course typically takes 12 to 14 weeks, leaving students with a break between terms.



## Enrollment and Tuition



iTEE University courses and programs are affordable for most students. Tuition rates vary by country or region. Students residing in Myanmar, India, Kenya, Zambia, Uganda, El Salvador, Guatemala, Mexico, United States, and Canada must apply, enroll, and pay tuition through the iTEE University Campus operated by our local or regional partners.

The list of contact information for our country and regional partners is on the website. Interested students can apply online at [itee.university/admissions/](https://itee.university/admissions/)

After completing an application, admitted students receive an email with a link to complete the enrollment process. Please check your email for this specific message, including your spam or junk folder. Tuition fees are country specific.

---

## Admissions

Any Christian leader seeking access to biblical training can apply for admission. The new student admission application is available online at [itee.university/admissions/](http://itee.university/admissions/).

- Students seeking a Certificate in Ministry are not required to have a secondary (high school) education.
- Students seeking a Diploma in Ministry or Associate of Arts in Ministry must have completed their secondary (high school) education and must provide confirmation of completion of that training.
- Students must be currently engaged in ministry either in the church or marketplace.
- Students should possess a desire to train other leaders, pastors, or church planters. We are highly committed to the Apostle Paul's pattern of discipleship. "And the things you have heard me say in the presence of many witnesses entrust to reliable people who will also be qualified to teach others." (2 Timothy 2:2, NIV)

---

## Programs



**Certificate in Ministry** students complete a flexible, non-formal training program designed for faithful, available, and teachable lay pastors and leaders without a high school diploma. Upon completion of ten certificate courses, students receive a certificate. Certificate courses are not transferable to undergraduate schools.

**Diploma in Ministry** students complete the 32 CU (Credit Unit) Diploma in Ministry program. This program is for busy pastors, lay pastors, and leaders with at least a high school diploma seeking local training.

**Associate of Arts in Ministry** students have a high school diploma, have completed the Diploma in Ministry program and seek further foundational coursework leading to a degree. The Associate program requires another 32 Credit Units, for a total of 64 CUs (Credit Unit) Associate. The Associate program is available in English only.

Non-credential students have not indicated an intention to complete a program. They seek to take diploma and/or certificate-level courses in their areas of interest.

Seminar Attendees pursue short seminars either online or face-to-face. Seminars have no academic entrance requirements and are non-credited.

---

# Grading Policies

Final grades will be either **pass or fail**. Facilitators will use online grade tracking to encourage and correct student work. Completing work in all the following areas is required to pass each course:

## Head

Reading course texts and articles, taking and passing quizzes, writing and submitting "Life Notebook" journal entries, and participating in discussions with other classmates are all part of the intellectual portion of the course.

## Heart

Students use their reflection journals to write a short, graded paper on personal spiritual insights learned, resulting in an awareness of God's work to form their character during the course.

## Hands

Students complete a guided project, customized for each course, that helps them develop ministry skills related directly to the course content. They then submit a graded report on that project.

## Deadline

Students must complete the course by the course deadline. Unless the Registrar extends the deadline, the grade is final once a class ends. Students may repeat a course for which they failed to earn a passing grade.

---

# Time Requirement



Multiple studies in educational research inform us that learning is tied to actual time spent on learning. Students who do well spend ample time on their studies. You should spend about 7-10 hours per week on your coursework.

iTEE University has adopted the broadly accepted standards per Credit Unit (CU) as follows:

- **1 CU** 2,000 minutes (40 hours including ten min./hr. breaks) of classroom/online/out-of-class study.
- **2 CU** 4,000 minutes (80 hours including ten min./hr. breaks) of classroom/online/out-of-class study.
- **3 CU** 6,000 minutes (120 hours including 10 min./hr. breaks) of classroom/online/out-of-class study.

The total time spent on a course includes all head, heart, and hands activities. The amount of time is particularly important for students seeking credit, especially those who may transfer their credits to resident schools.

---

# Transfer of Credits

Students seeking to receive credit using a transfer from an outside institution must provide the documentation to substantiate their claim. To apply for the transfer of credits for coursework from another institution, click here [itee.university/transfer-of-credit/](http://itee.university/transfer-of-credit/) and fill out the request form.

## Awarding Credit for Life Experiences

Personal ministry activities may result in credits awarded for the internship, if a student can demonstrate verified hours in discipling others. To apply for credits for life experiences, students should click here [itee.university/credit-for-discipleship-experience/](http://itee.university/credit-for-discipleship-experience/), fill out the request form, and follow the instructions printed on the form.

## Dropping a Course

iTEE University demonstrates highly relational learning, and our faculty makes every effort to work with students to facilitate their success. But sometimes, students do not or cannot follow through with their studies for various reasons. In these cases, students who do not display adequate progress will be removed administratively.

*No-Show Students*, who have registered for a course but don't do further work after iTEE University staff unsuccessfully attempts to contact them, are removed from the course.

*Drop-out students*, who begin work on a course but fail to maintain a record of progress, are removed from the roll after three weeks.

Students who have chosen to *withdraw* from a course must re-register if they take it later.

Where students have paid tuition for classes, *no refunds* will be given without specific authorization from the Dean of Students.

If a student enrolls in and fails to complete the same class *three times*, he may only enroll in that class again with special permission of the Dean of Students.

### Withdrawal

Students desiring to withdraw from a course program (Certificate, Diploma, or Associate) must inform the Dean of Students electronically. Any student who fails to take classes for three consecutive terms will be considered withdrawn from the program. A student who withdraws but desires to return may reapply at any time. The previous credits on their record may be applied toward their program completion. However, any student who withdraws and is re-accepted into the program must complete the requirements that are in effect at the time of their re-admission.

### Program Continuity

Students who maintain their progress in a program will be permitted to finish using the requirements in effect (as shown by the iTEE University Catalogue) when they start. In the case of a course no longer available, the Dean of Students will negotiate with the student regarding an alternative course. Progress is demonstrated by passing at least one course in any twelve-month period. Progress is subject to the requirement of each program level (Certificate, Diploma, and Associates of Arts): each program must be completed within five years from starting.

---

# Graduation



The **Certificate in Ministry** program requires passing ten Certificate-level courses or above, including an internship course. Students have five years to complete the ten courses.

The **Diploma in Ministry** program requires passing 32 CUs; 17 CUs must be completed in Bible/Theology courses, and 15 CUs must be ministry skill courses, including an internship. Students have up to five years to complete the 32 Credit Units for the Diploma in Ministry.

The **Associate of Arts in Ministry** program builds on the Diploma program and requires passing another 32 CUs. Seventeen CUs must be completed in Bible/Theology courses, and 15 CUs must be ministry skill courses, including an internship. The Associate of Arts in Ministry program is 64 CUs in total. Students have up to five years from the time they complete a Diploma to complete the 32 Credit Units for this degree.

---

## Certificate in Ministry

The Certificate in Ministry is a non-formal training program for leaders without a high-school (or equivalent) educational background. It consists of nine courses plus an internship, thus completing ten courses. For all students, Galatians must be taken as the first course. All online students must take Student Orientation before beginning.

A Diploma Level course (or higher) that covers the same topical material as a required Certificate Level course may be substituted for that Certificate Level course. Contact your academic advisor or the Dean of Students for information about course substitutions.

**At least nine of ten courses are required to graduate:**

- Galatians (required)
- One to One
- Discovering the Bible
- Spiritual Leadership or Ministry Leadership
- Communicating God's Word
- Foundations of Christian Marriage
- Old Testament
- Major Bible Doctrines
- New Testament Gospels
- New Testament Epistles
- Internship (required)



# Diploma in Ministry

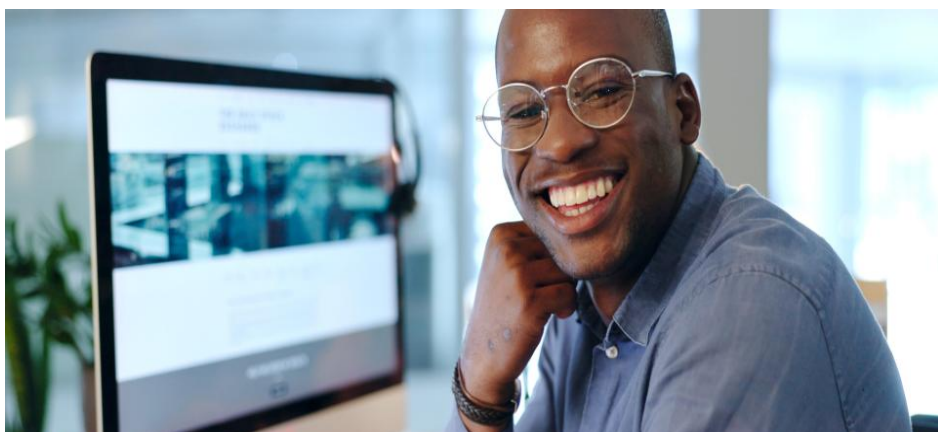


Our Diploma program is designed for shepherd leaders who have completed high school or its equivalent. The program seeks to equip leaders holistically with Head (knowledge), Heart (character), and Hands (ministry skills). Students must complete 32 Credit Units. The Dean of Students will automatically place you into each required class. You will be notified which class you were enrolled in before the beginning of each term. When electives are available, the Dean of Students Office will contact you before enrolling you in the elective that best fits your ministry needs. The course list may vary slightly with partner preferences.

Credit Unit Requirements	
17 CUs	Diploma Program: Bible & Theology Requirements
2	<b>Galatians</b>
3	<b>Hermeneutics</b>
	Bible Study Methods*, or He Gave Us Scripture, or Studying the Bible
3	<b>Bible Study Elective</b>
	Romans, or I Corinthians, or I Peter, or Mark, or Psalms
3	<b>Old Testament Survey</b>
3	<b>New Testament Survey*</b>
3	<b>Major Bible Doctrines</b>
15 CUs	Diploma Program: Ministry Skills Requirements
3	<b>The Christian Life</b>
3	<b>Foundations of Christian Marriage</b>
3	Ministry Leadership, or Spiritual Leadership
3	<b>Communication Elective:</b> Communicating God's Word, or Transformational Teaching, IDEA
3	<b>Internship</b>
32 CUs	<b>Bold courses are required</b>
	<b>* Indicates courses in development</b>

# Associate of Arts in Ministry

The 64 Credit Unit Associate of Arts in Ministry program is founded on the Diploma, with most Diploma students continuing onward. Those already possessing a suitable Diploma in Ministry or equivalent must discuss this with the Dean of Students as part of their entry process. The Associate's degree is an English-language program, a foundation for ministry, and designed for students who may desire to advance their academic studies with other Bible and theological schools. It is specifically designed for busy pastors, lay pastors, and leaders with at least a high school diploma who study online or in face-to-face cohort groups in their localities.



Students may bring approved coursework from another approved institution, but no more than 25% of the total credits (16 CUs) for an Associate of Arts degree can be transferred. Credit may be granted for previous ministry experience, internship participation, and coursework outside of iTEE University.

Credit Unit Requirements	
17 CUs	Associate Program: Bible & Theology Requirements
3	<b>Genesis*</b>
3	<b>Gospel of Mark</b>
3	<b>Bible Study Electives</b>
	Romans, or I Corinthians, or I Peter, or Acts*, or Psalms
3	<b>Church History 1*</b>
3	<b>Church History 2*</b>
3	<b>Introduction to Apologetics*</b>
15 CUs	Associate Program: Ministry Skills Requirements
3	<b>Biblical Evangelism*</b>
3	<b>The Intersection of Faith and Science*</b>
6	<b>Ministry Skills Electives:</b> at least two of the following courses
	Church Planting, Church Dynamics, Culture Meets Scripture, Transformational Teaching, Communicating God's Word, IDEA
3	<b>Internship</b>
32 CUs	<b>Bold Courses are Required</b>

**\* Indicates course in Development**

---

# Certificate in Ministry

## Course Descriptions

This is a list of unique courses for the Certificate program. Some regional variations in course offerings exist.

### Spiritual Growth

#### **One to One**

This course is designed to help a young believer or unbeliever by introducing the student to who Jesus is. It also serves as a discipleship guide for believers to use with new believers. We recommend studying this part even if Christ is already Lord of your life.

#### **Practical Christian Living**

This training course aims to equip Disciples who will make Disciples. We expect that through this introductory course, participants will be equipped to share their faith with others, the Gospel will be spread at a fast pace, and churches/missional communities will be planted.

### Bible Study Approaches

#### **Discovering the Bible**

Discovering the Bible is about how to study and interpret the Bible correctly. Every disciple-maker should know how to accurately hear, read, understand, and obey the Word of God. By the end of this course, the student will be able to confidently hear and/or read what the Scripture says, determine what it means, and how it should be obeyed and applied in their lives and the life of the church.

### Old Testament

#### **Old Testament Survey**

This class is a survey of the entire Old Testament. Students will learn information about each OT book and its historical context, as well as how to interpret the different genres of literature found in the OT. Additional relevant topics such as the creation, the concept of holy war, and the role of the Law in the New Covenant era are also covered. (3 CUs)

### New Testament

#### **New Testament Gospels**

With the Gospels, God's promise of life comes to the forefront. Written for both Jews and Gentiles, they show us the Messiah whose death brings us eternal life through a gift of grace to all who believe in Him. Christians and non-Christians alike should seek to become familiar with the Gospels and therefore with the Savior those Gospels portray.

#### **New Testament Epistles**

Most of the New Testament consists of "epistles" - letters written to churches and believers, explaining various truths about the work of Jesus and its implications for all believers. This course covers nearly all the NT letters (excluding 1 & 2 Timothy and Titus) and will equip you to understand, teach and live out the gospel more fully as you study these.

## Practical Ministry

### **Disciples Making Disciples**

This training course aims to equip Disciples who will make Disciples. We expect that through this introductory course: Participants will be equipped to share their faith with others. The Gospel will be spread at a fast pace. Churches/Missional communities will be planted.

### **Internship**

The internship course combines the skills that you learned and the content of your training and opens the door for you to transmit the training to others. You will select a group and teach the content of an iTEE University course to that group under the direction of a supervising professor.

---

# Diploma and Associate Degree Course Descriptions

Some Diploma-level courses are used for the Certificate program.

## Bible Study Courses

### Galatians

In this course, you will study Paul's letter to the Galatians. You will look at the historical background and examine the vital theological issues in the early church with which Paul dealt. You will become better acquainted with the life, character, and ministry of the apostle Paul. You will also gain new insights into Christian life and service as you apply the teaching of the epistle to contemporary situations. (2 CUs)

### Romans

In this course, you will study Paul's letter to the Romans. You will look at the historical background and examine the vital theological issues in the early church in Rome. You will become better acquainted with the life, character, and ministry of the apostle Paul. You will also gain new insights into Christian life and service as you apply the teaching of this epistle to contemporary situations. (2 CUs)

### The Gospel of Mark

As a Bible student, have you ever wished you could sit and learn from someone who knew Jesus in person? From someone who saw Him as He walked this earth and taught people as no one had ever taught before? How about learning from someone who was not only a child in the faith of Jesus' most prominent disciple, Peter, but one who also accompanied the apostle Paul on his first missionary journey?

John Mark, the writer of the second gospel in the New Testament, was one such person. In this course you can learn about Jesus second hand from Peter.

### True Spirituality: A Study of 1 Corinthians

When Paul wrote 1 Corinthians, the church in Corinth was probably not the type of church that most of us would have wanted to join. Many of its problems would have been immediately obvious to the casual attendee: The church was divided; people behaved in selfish, unloving ways; some denied such fundamental doctrine as the resurrection of the dead; the church tolerated gross immorality; worship services were disorderly. Paul counsels the church to let love and godliness have first place in their assemblies. The Corinthian believers had lost sight of the focus of the gospel: love God and love one another.

### 1 Peter: Living Faithfully in a Hostile World

Peter ministered to Christians in the Roman Empire who suffered for their faith in Christ. His message to them was to remain faithful to Christ as they lived in a world hostile to Christianity, awaiting their Lord's triumphant return. 1 Peter also speaks to us today, teaching us how and why we should live faithfully in a world hostile to our faith. (3 CUs)

### An Introduction to Genesis

This course introduces the biblical books of Genesis to Deuteronomy as the standard for Israel's faith. It gives an overview of the primeval history, the story of Adam and Eve's sin in the garden, the great flood in the days of Noah, and the history of God's dealings with Abraham and his descendants. (3 CUs)

### Acts

The book of Acts portrays, in a narrative way, the life of the early church. The theme of the book is, "the mission of the early church." It tells how Jesus continued to carry out his mission that he started, as recorded in the book of Luke, by working through the people of the early church. The author discusses the growth of the church from its Jewish roots through reaching the ends of the earth to fulfill the Great Commission. (3 CUs)

## Bible Study Methods/Hermeneutics

### He Gave Us Scripture

Evangelical Christians affirm the Scriptures as God's inerrant word. However, we sometimes disagree over the meaning of particular verses or passages, which can influence our Christian doctrine and practice. One reason for these disagreements is that there are many different approaches to interpreting the Bible. But how do we know which approach to interpretation is the most responsible? This course will help answer that question. It is based on the lecture series, He Gave Us Scripture: Foundations of Interpretation, produced by Third Millennium Ministries and hosted by Dr. Richard L. Pratt, Jr. with contributions from a variety of professors. (3 CUs)

### Bible Study Methods

Learning to study the Bible is one of the most critical skills that a Christian should know. This course will teach you how to study the God's Word effectively and faithfully. It will cover the inductive method of study, how to interpret different genres, growing spiritually through Bible study, and interpreting the Bible in a community. This is the standard hermeneutics (how to interpret texts) course for the iTEE University Diploma program. (3 CUs)

### Studying the Bible

This course will enable you to study the Scriptures diligently and effectively, with the intended result that you will love God fervently and depend on the Holy Spirit for illumination. (3 CUs)

## Theology/Church History

### Major Bible Doctrines

Major Bible Doctrines focuses on eleven doctrines that cover the essential topics of theology. The flow of this course is a systematic study of God. By the end of this course, the student will clearly understand who God is and what God is doing in our world to glorify Himself. (3 CUs)

### Introduction to Apologetics

The course aims to define apologetics, enhance evangelism, and highlight the coherence and superiority of the Christian worldview. (3 CUs)

### Old Testament Survey

This class is a survey of the entire Old Testament. Students will learn information about each OT book and its historical context, as well as how to interpret the different genres of literature found in the OT. Additional relevant topics such as the creation, the concept of holy war, and the role of the Law in the New Covenant era are also covered. (3 CUs)

### New Testament Survey

This course teaches the essential content and teachings of the 27 books of the New Testament. Students will learn information about each NT book and its historical context, as well as how to interpret the different genres of literature found in the NT: historical narratives, epistolary communication, and apocalyptic literature. (3 CUs)

### Church History I

This course provides an introductory survey of church history from A.D. 30-1517. This covers the Apostolic Fathers, Early Church Fathers, Councils and the development of creeds, and the events of the Middle Ages leading to the Reformation. (3 CUs)

## **Church History II**

This course describes how the church expanded and faced challenges through the period from the Reformation to modern times, including the Reformation, the Enlightenment, and the Church in the Modern Age. (3 CUs)

## **Science and Scripture**

### **Intersection of Faith and Science**

Starting from a Biblical worldview that sees Scripture as the inspired Word of God, this class explores the history of science and how that intersects with a Christian outlook today. Some of the gains of science, along with its limitations, will be considered from the understanding that science itself is a gift of God to humanity, in providing us with minds capable of scientific inquiry, a universe to explore, and the curiosity to do so. (3 CUs)

## **Ministry Skills**

### **The Christian Life**

This course helps students grow in their relationship with Christ and equips them to help others grow, no matter where they are in that relationship. (3 CUs)

### **Foundational Studies in Christian Marriage**

This course explores the founding principles of marriage in Scripture and several bedrock issues that affect marriage, such as understanding yourself and your spouse. It is designed primarily for engaged and married people or those who minister to them, but it is also useful for those who want to improve their close relationships. There will be practical and theological learning and a weekly discussion or other project with a spouse, fiancé, family member, or close friend. (3 CUs)

### **Spiritual Leadership**

For Christians, leadership is a spiritual process that requires a deepening walk with God. This course addresses several facets of leadership, including the need for spiritual leaders, leadership models, qualities of leaders, the discipline of prayer, stewardship of time and resources, and reproducing and developing leaders. (3 CUs)

### **Ministry Leadership**

Written from a Christian perspective, this course will show leaders how to develop their character, their abilities and their influence. Topics covered include values, vision, mission, purpose, goals, strategy-planning, communication, team-building, developing other leaders, setting priorities, leading change, and more. This is a practical and valuable course for all types of leaders.

### **Communicating God's Word**

This course will help you to communicate God's Word more effectively through speaking, teaching basic skills and also giving opportunities to sharpen students' existing skills. It will be useful for preachers but also for teachers and lay leaders, men and women - anyone who wants to communicate God's Word more effectively!

### **Transformational Teaching**

This course takes the learner on a journey to observe Jesus' pattern of disciple making, with the goal of aligning our own disciple making process with Jesus'. Learners studying this course are provided with tools for teaching both face-to-face as well as online. We will explore the way Jesus taught, introduce the educational tools that transformational teachers use, and learn the unique characteristics of online teaching. The course's goal is to prepare biblically mature teachers who are themselves being transformed and able to lead students to become transformative disciple makers themselves.

### **Interactive Discipleship Education Approach**

Learning to Teach using an IDEA (Interactive Discipleship Education Approach). This course helps students to learn what helps people remember, understand, and change their beliefs. Participants learn how to create a lesson plan and lead their learners to process new concepts deeply and to make choices to change. The goal is to equip disciples with skills so they can build the Kingdom of God among families, churches, and wider circles. (1 CU)

### **Excellence in Interactive Teaching**

EIT is a 3-day workshop, taught in person. It helps students develop understanding of how people learn and develop attitudes and beliefs. The workshop guides students through biblical and educational principles to engage people as transformational agents. (1 CU)

### **Biblical Evangelism**

This course presents the biblical principles that guide evangelism methods. It describes forms of evangelism and provides lessons to use in discipling new converts. (3 CUs)

### **Church Planting**

This course examines the theological foundations and place of church planting in fulfilling the Great Commission. The course then surveys methods, models, strategies and particular challenges of planting and establishing indigenous churches in intercultural, missionary settings.

### **Church Dynamics**

This pastoral ministry course will cover many facets of church ministry, including what a church is, the church's tasks, church leadership, edification, worship, and how to develop your philosophy of ministry. (3 CUs)

### **Culture Meets Scripture**

This course guides participants in examining their particular cultural practices and causes them to "meet" Scripture - see what Scripture says about those practices. This comparison offers a foundation of learning so that learners' communities will choose to honor God in their cultural practices. (3 CUs)

### **Worshipping God in the Psalms**

In the Psalms, we enter more fully than anywhere else into the world of worship. For the psalmist, this meant pouring out his lament to God, telling God exactly how he felt and how much he longed for God's intervention. However, as dark and painful as these moments might be, the psalmist realized that God was faithful, righteous, loyal, and good in dealing with him. Then, his heart turned to songs of praise. This course is designed to help you read and understand the book of Psalms more deeply. While many psalms will be explained, the primary purpose is to give you the insight and skills for reading and interpreting the psalms yourself. (4 CUs)

### **Transformational Discipleship**

A practical, hands-on course introducing youth leaders to the process God uses to develop youth ministry leaders among youth. This course focuses on multiplying transformational youth leaders within the urban context. The principles come from Dr. Ted Travis' devotion to scriptural teaching on developing leaders and a lifetime of ministry experience training youth leaders. (3 CUs)

### **Internship**

The internship course combines the skills that you learned and the content of your training and opens the door for you to transmit the training to others. You will select a group and teach the content of an iTEE University course to that group under the direction of a supervising professor. (3 CUs)



## Contact Us:

### **General Information**

info@itee.university

### **Admissions**

admissions@itee.university

### **Dean of Students**

+1 (740) 815-0588

deanofstudents@itee.university

### **iTEE University India**

iteeuindia@itee.university

### **iTEE University Africa**

iteeuafrica@itee.university

### **iTEE University Spanish-Speaking World**

iteeuspanishworld@itee.university

### **iTEE University North America**

georgel@itee.university

### **US Mailing Address**

iTEE University

PO Box 125

Copperas Cove, TX 76522

### **Phone**

+1 (512) 712-2495

### **Web**

<https://itee.university>

**Bringing relationally driven biblical  
ministry education to church leaders  
lacking access to it.**